

Specifications

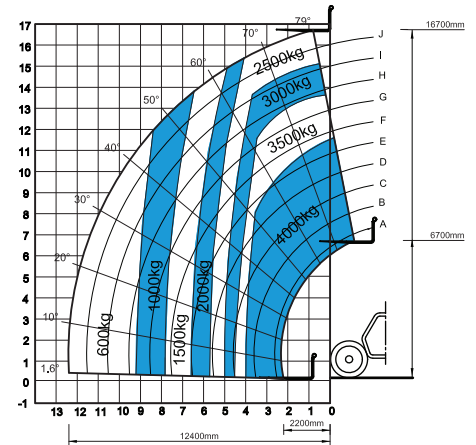
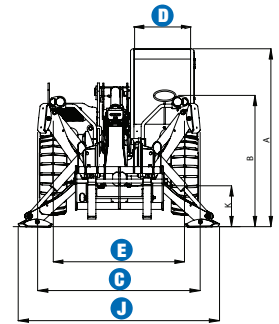
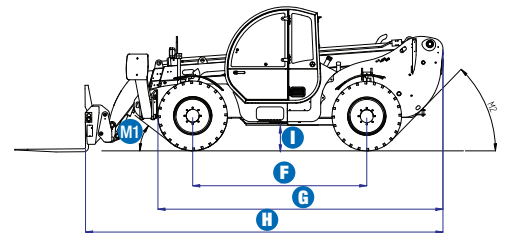
| MODEL | | GTH™-4017 | |
|---|----------|------------|--|
| MEASUREMENTS | Metric | US | |
| Lifting height maximum with outriggers | 16.72 m | 54 ft 9 in | |
| Lifting height maximum without outriggers | 16.59 m | 54 ft 4 in | |
| Lifting capacity maximum | 4,000 kg | 8,818 lbs | |
| Lift capacity at maximum height | 2,500 kg | 5,512 lbs | |
| Lift capacity at maximum reach | 600 kg | 1,323 lbs | |
| Forward reach maximum | 12.55 m | 41 ft 2 in | |
| Reach at maximum height | 0.59 m | 1 ft 11 in | |
| A Height | 2.61 m | 8 ft 7 in | |
| B Height at steering wheel | 1.65 m | 5 ft 5 in | |
| C Width | 2.45 m | 8 ft | |
| D Inside cab width | 0.78 m | 2 ft 7 ft | |
| E Track | 1.98 m | 6 ft 6 in | |
| F Wheelbase | 2.85 m | 9 ft 4 in | |
| G Length at front wheels | 4.70 m | 15 ft 5 in | |
| H Length at fork-holder plate | 6.49 m | 21 ft 3 in | |
| I Ground clearance | 0.42 m | 1 ft 5 in | |
| J Overall width, outriggers extended | 2.95 m | 9 ft 8 in | |
| M1 Obstruction angle | 37° | 37° | |
| M2 Departure angle | 32° | 32° | |

| PRODUCTIVITY | | |
|---|----------------------------------|---------------------------------------|
| Inside/outside turning radius | 2.15 m / 4.50 m | 7 ft / 14 ft 9 in |
| Break out force (with 800L bucket SAE J 732) | 7,900 kg | 17,417 lbs |
| Drawbar pull | 8,200 kg / 7,250 kg | 18,076 lbs / 15,984 lbs |
| Drive speed | 35 km/h | 22 mph |
| Fork-holder plate rotation | 145° | 145° |
| Chassis levelling on the front axle | +/- 8° | +/- 8° |
| Floating forks | L 1200 mm Section 120 x 50 mm | L 3 ft 11 in Section 4.7 in x 2 in |
| Tyres (DIN 70361) | 405/70-24" PR14 8-hole wheel rim | |
| Lifting/lowering speed** | 14 / 10 sec | 14 / 10 sec |
| Extension/retraction speed** | 26 / 16 sec | 26 / 16 sec |

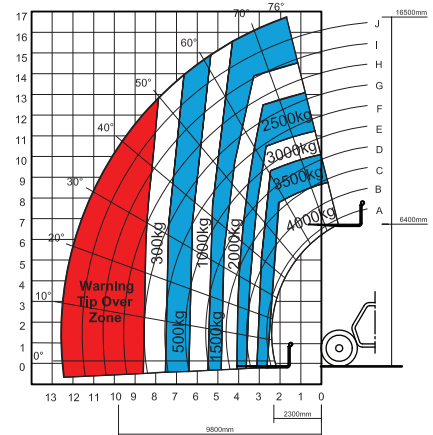
| POWER | | |
|-----------------|--|----------|
| Engine | Perkins 1104 D-44T turbo diesel 74.5 kW (100 hp), Tier 3 | |
| Tank capacities | | |
| Fuel | 135 L | 35.7 gal |
| Engine oil | 7 L | 1.8 gal |
| Hydraulic oil | 150 L | 39.6 gal |

| WEIGHT | | |
|-----------|-----------|------------|
| Weight*** | 11,850 kg | 26,125 lbs |

| STANDARDS COMPLIANCE | AS 1418.19, EN 1459 EU Machinery Directive 98/37/CE Operating cab conforms to ISO3471 (ROPS) and ISO3449 (FOPS) Low emission engine conforms to EU Directive 97/68/EC stage III |
|----------------------|--|
|----------------------|--|



Lift capacity chart (with outriggers)****



Lift capacity chart (without outriggers)****

** Without load

*** Weight will vary depending on options and/or country standards

**** Load ratings vary depending on attachment

Features

STANDARD FEATURES

MEASUREMENTS

- 4,000 kg (8,818 lbs) maximum lift capacity
- 16.72 m (54 ft 9 in) maximum lift height
- 12.55 m (41 ft 2 in) maximum forward reach

PRODUCTIVITY

- 4WD
- Four wheel steer
- Three steering modes:
 - Front wheel steer
 - Crab steer
 - Coordinated steer
- Hydraulic line on boom
- Power assisted steering
- Front outriggers
- Hydrostatic transmission with variable displacement pump and motor electronically controlled
- Two-speed mechanical gearbox
- Multifunction electro-proportional 4 x 1 joystick
- Limited slip differential on front axle
- Chassis levelling on front axle +/- 8°
- Floating forks
- Quick coupling of attachments from cab
- Two-section door (glass upper/steel lower)
- Angle and length indicators on boom
- Adjustable suspended seat
- Large diameter steering wheel
- Front and rear windscreen wipers
- Sunshield
- Roof protection grid
- Two side rear view mirrors
- Front and rear lights
- Windshield protection grid
- Side mounted engine for easy access to components
- Oil immersed multi-disc brake on both axles
- Lockable fuel tank

STANDARD FEATURES cont.

- Load Management System (LMS) with:
 - Load moment indicator with LEDs
 - Audible alarm
 - Automatic lock-out of boom extension, lifting and lowering
 - Automatic lock-out of outriggers
- Automatic lock-out of rear axle
- Control enable switch
- Hydraulic inching
- Boom safety strut

POWER

- Perkins turbo diesel 74.5 kW (100 hp)

TYRES

- 405/70-24" tyres

OPTIONS & ACCESSORIES

PRODUCTIVITY

- Air conditioning
- Hydraulic winch pre-arrangement on boom
- Man-platform / Emergency hydraulic pump pre-arrangement
- Emergency pump kit
- Special air filter
- Adjustable spotlight on boom including cable reel and cable bracket
- Adjustable spotlight on cab
- Fish eye rear view mirror in the back
- Water muffler
- Rear wheels alignment sensor
- AM/FM radio with CD player

ATTACHMENT OPTIONS

Genie has a large range of attachments available. Please contact Genie or your nearest Genie telehandler dealer.



Genie Australia – Toll free number 1800 788 633

Brisbane (Head Office)
33 Kimberley Street
Darra QLD 4076

Sydney
74 Glendenning Road
Glendenning NSW 2761

Melbourne
374 Hammond Road
Dandenong VIC 3175

Perth
83 Bannister Road
Canning Vale WA 6155

Genie United States Distributed by:

18340 NE 76th Street
P.O. Box 97030
Redmond, Washington
98073-9730