

2600 R



www.ommelift.dk

CRAWLER MOUNTED BOOM PLATFORM

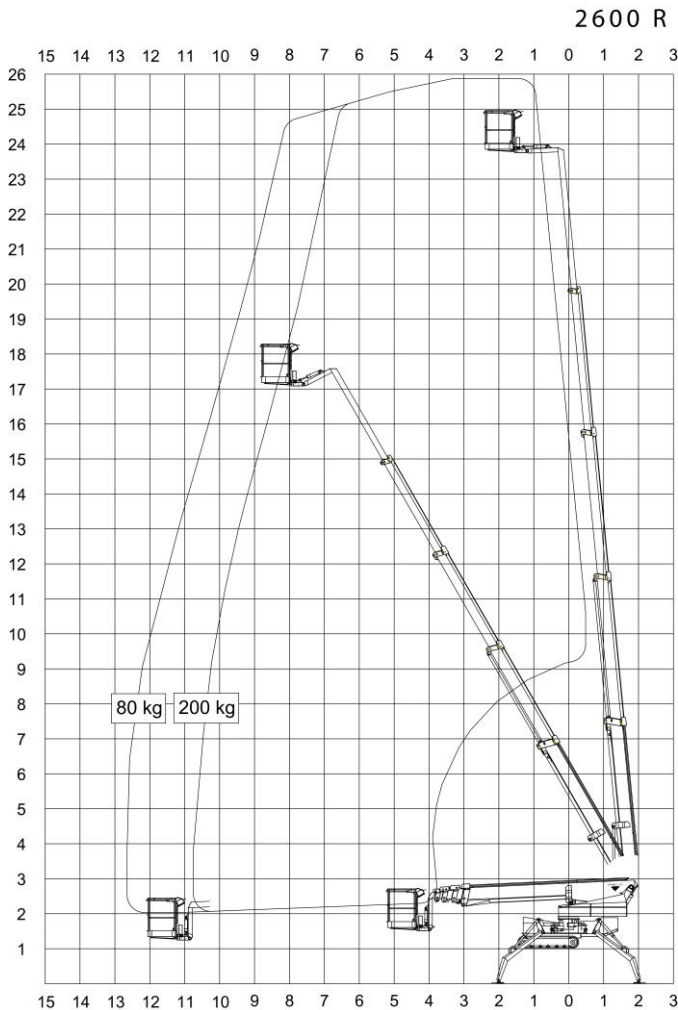
OMME LIFT A/S – Lægårdsvej 4 – DK 7260 Sdr. Omme
Phone: + 45 753 413 00 – Fax: + 45 753 415 92
E-mail: omme@ommelift.dk – Web: www.ommelift.dk

OMMELIFT



Quality since 1906

2600 R (J) Crawler Mounted



Technical Data:	2600 RB	2600 RBD	2750 RJ Fly jib
Max. working height	25.80 m		+ 1.4 m
Max. outreach	12.60 m		
Max. basket load	200 kg		
Basket size	1.25x0.8x1.1m		
Rotation	± 355°		
Battery	24V/400Ah/5h	24V/200Ah/5h	
Charger	24 V/30 A		
Diesel engine		14kW/18,8hp	
Generator		24 V/22 A	
Travelling length	7.31 m		+ 0.19 m
Travelling height	1.99 m		
Travelling width	1.10 m		
Operational width	4.60 / 3.75 m		
Total weight approx.	3625 kg		+ 100 kg
Gradeability: Across slope up to	25% (14.0°)		
and down slope up to	35% (19.3°)		
Stabilization up to	40% (21.8°)		
Proportional controls	+		
230 V outlet in basket	+		
Transformer	O		
Wireless remote control	O		
Non-marking tracks	O		
Automatic set-up and take-down	O		

+ Standard O Optional

HIGH SPECIFICATION – HUGE OUTREACH



Outside



Inside



Easy set up



Fly jib (option)

- Type 2600RB and 2600RBD are identical apart from the power sources. Standard features include hydraulic stabilizers, turnable basket and proportional controls. The adjustable stabilizer spread provides substantial reduction in operational width. The basket mounting that forms a "fly" boom mounted to the top boom section gives increased outreach over obstacles. The specially designed steel booms made from high and broad profiles allow greater outreach whilst maintaining a high degree of stability and rigidity. Being short in travelling length the platform is extremely manoeuvrable in narrow places. The self-propulsion system is electronically operated by proportional levers comfortably placed in a light weight mobile control box.
- 2600RB is powered by a heavy duty 24 V battery pack. In order to accommodate extreme and long term usage a transformer for direct mains connection is included. This type is especially suited for indoor operation.
- 2600RBD is a battery and diesel engine bi-energy unit. This type is therefore suited for both indoor and outdoor usage. The diesel power pack provides an incredible gradeability of remarkable 35%, equivalent to 19.3°, an environment where lift deployment is also possible. Underlining the general stability is the easy self-propulsion manoeuvrability across a 25% (14.0°) slope. Combined with the strong, non-skid crawler belts this lift type is indeed go anywhere access.